

Winsomere Cres

Location Winsomere Crescent, Westmere, Auckland, New Zealand
Site area 783m²
Bldg. area 400m² (including garage)
Total floor area 400m²
Architecture design Dorrington Atcheson Architects _ Tim Dorrington
Structural engineer Sullivan Hall
Photographer Emma-Jane Hetherington

A contemporary home incorporates the charming but time-worn house, and capitalizes on the stunning views on offer.

The original house on this waterfront site was a double-skin brick bungalow with warren-like rooms and little connection with the foreshore. The clients liked the traditional detailing of the existing house but wanted to maximize the aspect and views.

Philosophically, a renovation was preferred to a new build and as a result, the focus of the design was on an amalgam of the old and new structures.

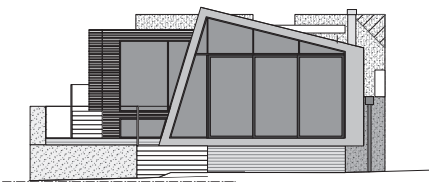
Formally the house comprises two existences and two new blocks, linked by the hallway, foyer and stairs. The existing blocks contain two brick-clad and lined bedrooms, an office

and an original art deco bathroom. The new blocks contain the living spaces in a zinc-clad apexed void, and the master suite in a cedar-screened block. These sit on a lower level plinth, which houses a guest bedroom, bathroom, laundry and media room.

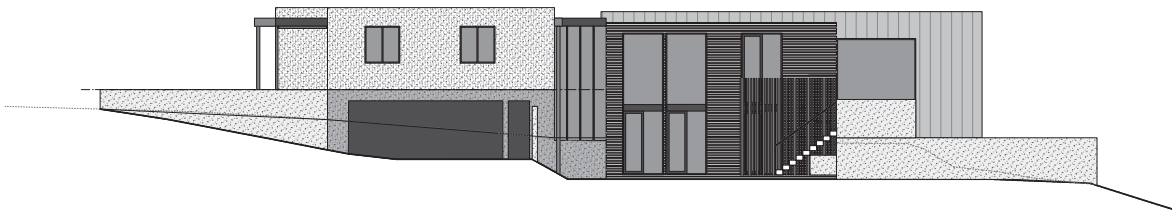
The original brickwork has been stripped back and painted white as part of the re-presentation of the old house, and is further enhanced by the refinished interior doors, double-glazed existing lead-light windows and timber details.

The house is directed to the view and is arranged so that, on entry from the street, there is a natural progression from the original house through to the new. From the foyer, stairs lead down to the living areas, and the asymmetrically framed view is revealed.

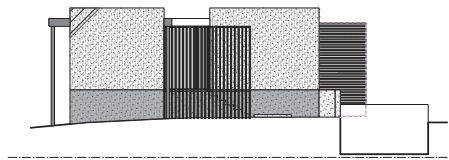




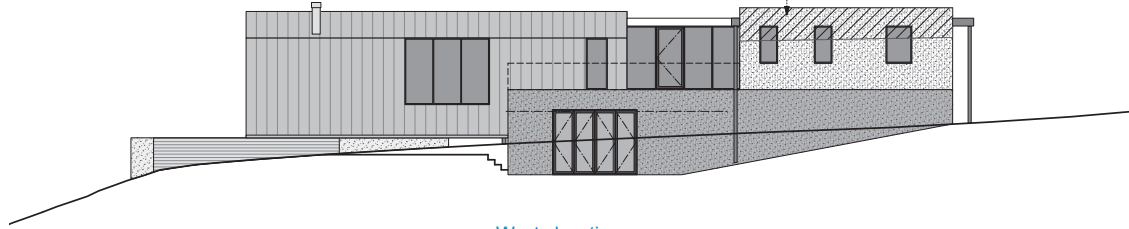
North elevation



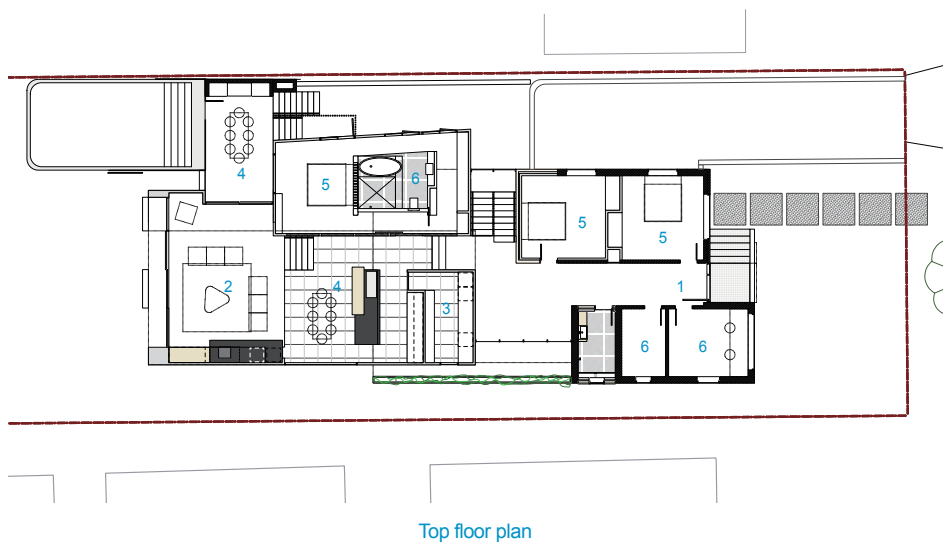
East elevation



South elevation



West elevation



- 1. Entrance
- 2. Living room
- 3. Kitchen
- 4. Dining room
- 5. Bedroom
- 6. Bathroom
- 7. Laundry room
- 8. Media room

