

# Robinson House

**Auckland, New Zealand**

Tim Dorrington Architects

Photography: Emma-Jane Hetherington

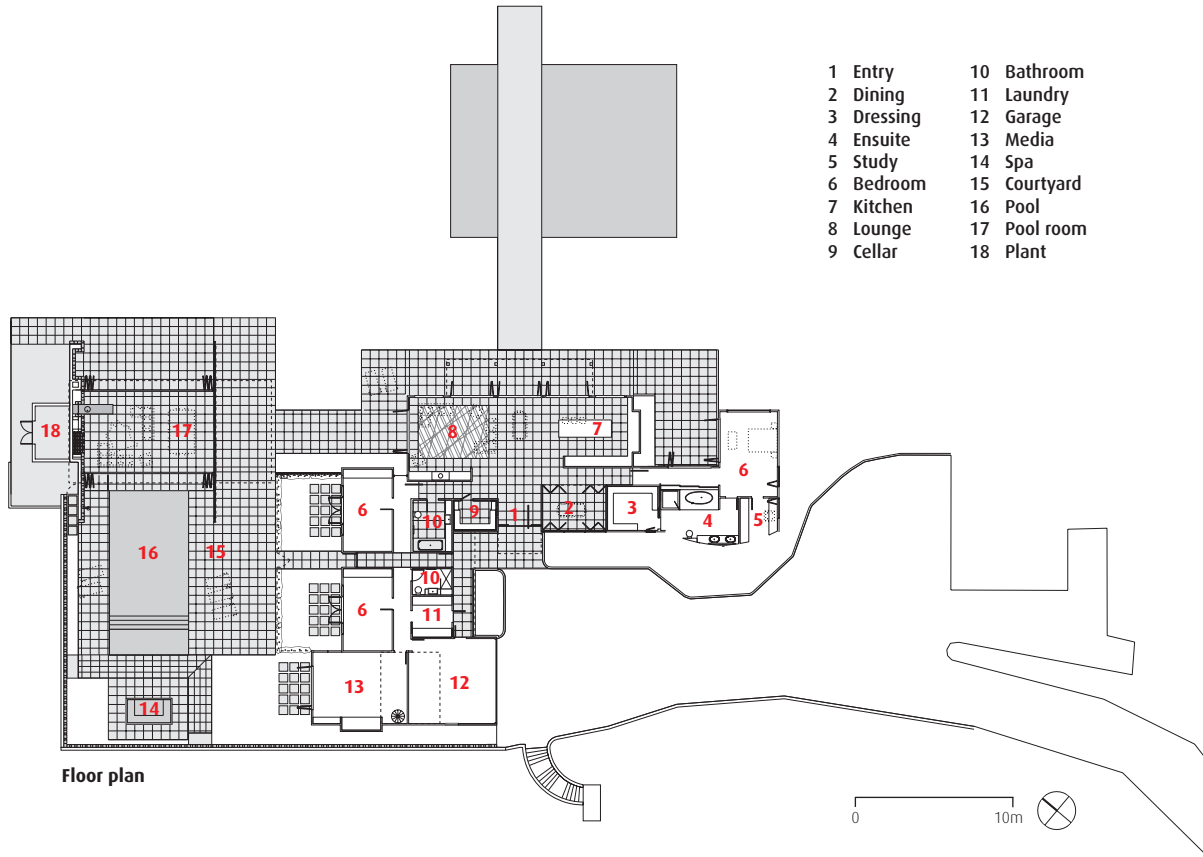
This major transformation grew from an original brief that included adding a pool pavilion adjacent to the existing pool. Added to the brief were a transformation of the exterior presentation, reconfiguring the interior spaces, and re-presenting and re-planning the grounds around the house.

The main house now features black stained board and batten gabled “sheds” in homage to the rural setting, and to blend more with the natural aspects of the site. Internally the house was completely re-planned and finished giving more appropriate priority to the size and layout of individual spaces.

The new pool pavilion is designed as a roof plane sitting lightly on a stone landscape wall at one end and an oversized steel frame at the other. The stone wall steps and continues around the pool area, containing the space. The pool is centered in the courtyard and appears to have scooped out of the stone. The water level of the pool matches that of the surrounding stone tiles, while the pavilion floor hovers slightly above to provide housing for the pool cover.

The three glazed walls of the pavilion can be completely opened up, allowing maximum flexibility in the usage of the space to suit weather conditions.





# Rutherford House

**Oruatua, New Zealand**

Tim Dorrington Architects

Photography: Emma-Jane Hetherington

While spectacular, the location of this house, bordered by the Taupo Tauranga River and close to Lake Taupo, had some associated risks. A flood plain covers the site, requiring minimum floor levels of almost 3 feet above ground level.

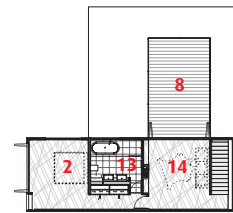
The brief was to create a modern holiday house suitable for the hot summers of Lake Taupo and the cold winters for skiing on Mt Ruapehu.

The house has four main elements: a concrete base, which at some points is folded up to contain interior space; two black cedar-clad bedroom blocks; and a white structured “veranda,” which one of the black boxes appears to slip under.

The concrete base provides the required floor level above ground to suit flood plain requirements and provides the opportunity for intermediate zones between inside and out. Raised decks from both the main living room and the second lounge create elevated and—in the case of the front deck—covered outdoor spaces.

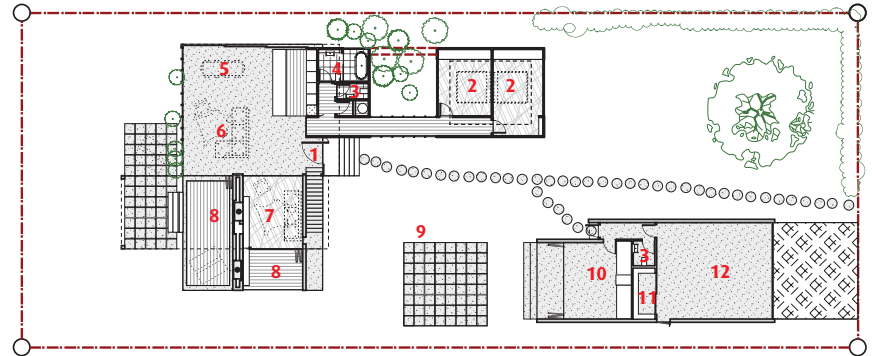
The living space incorporates several layers of space to suit differing climates, activities, and degrees of privacy. The kitchen, lounge, and dining areas are in a large open-plan “veranda.” An adjoining “snug” with fireplace can be closed off from the main space. The top-floor sitting room provides a private space to retreat to.





Second floor plan

- |            |                 |
|------------|-----------------|
| 1 Entry    | 8 Deck          |
| 2 Bedroom  | 9 Courtyard     |
| 3 WC       | 10 Bunk room    |
| 4 Bathroom | 11 Storage      |
| 5 Dining   | 12 Garage       |
| 6 Living   | 13 Ensuite      |
| 7 Snug     | 14 Sitting room |



First floor plan

